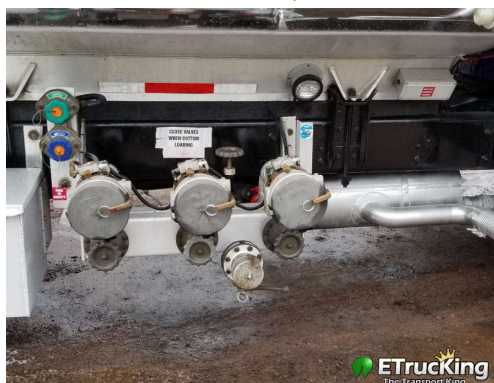


2007, International, Tank Truck, Fuel Oil, 073015, Aluminum, 3100 -----,
37000 -----, Used



Seller Info

Name: Dan Gibb
Company: Post Leasing and Sales, Inc.
Business Vendor
Type(s):
First Name: Dan
Last Name: Gibb
Phone #: (865) 213-1174
Email: sarah@petroleumtrucks.net
Website: <http://www.postleasing.com>
Logo:



Country: United States
Address: 1701 Sutherland Ave
City: Knoxville
State/ Province: Tennessee
ZIP code: 37921
About Us:

Post Leasing and Sales, Inc. has been helping people in the petroleum transport industry for over 55 years. We buy and sell used tank trucks. We have a large inventory of refurbished fuel trucks. We also custom build to what customers need. We specialize in a variety of petroleum transport trucks: Fuel Trucks, Heating Oil Trucks, Lube Oil Trucks, Waste Oil Trucks, Water Trucks, Tank Trailers, Fuel Delivery Trucks, and Fleet Fueling Trucks.

Listing details

Reference Number: ETK723142

Common

Title: 2007 International 3100x3 Alum Tank
Condition: Used

Truck Mfr: International
Year: 2007
Tank Mfr: Boston Steel & Mfg Co
Tank Year: 2007

Dimensions, Capacity, & Weight

Truck Class: Class 8 (33,001-&-up) Heavy-heavy
Tank Composition: Aluminum
Compartment(s): 3
Capacity (Liq. Wgt.): 3100 gal
Weight: 37000 GVW

Engine & Transmission

Fuel: Diesel
Engine Mfr: International
Engine Model / Type: DT 466
Horse Power: 285
Transmission: Automatic
Transmission Speed: 6 Speed



Underbody

Axle Type(s): Single
Front Axle Wgt.: 14000 lbs
Rear Axle Wgt.: 23000 lbs

Wheels & Tires

Tire Size(s): 22.5
Tires Condition: 50%

Additional information

Comfort: A/C, Power Steering,
Heated Mirrors
Additional information: 2007 International 4400,
International DT 466
Engine @ 285
horsepower, Allison
Automatic 6 Speed
Transmission, Power
Steering, Air
Conditioning, Heated
Mirrors, Exhaust Brake,
Differential Lock, 12R
22.5 Front Tires, 11R
22.5 Rear Tires, 37,000 lb

GVW (14,000 lb Front,
23,000 lb Rear).

2007 Boston Steel 3100
Gallon 3 Compartment
(700-900-1500)
Aluminum Tank, Single
Pump, LC Meter with
LCR II System, Bottom
Loading, Air Operated
Internal Valves.

*View Listing: <https://www.postleasing.com/inventory/2007-international-4400-single-axle/>

*View All Inventory: <https://www.postleasing.com/inventory-page>

Stock #:

073015

Location

Use Address on
Profile:

Yes